

Smart and sustainable energy management

Save 30% on energy costs by optimizing your energy consumption and get insight into your usage with xxter




xxter

**Energy
Solutions**

 www.xxter.com

 sales@xxter.com

 +31 (0)20 - 2 18 42 01

Smart Energy Manager

Optimize your energy usage and save up to 30% on your energy bills with xxter's Smart Energy Manager

Why use our Smart Energy Manager?

- **Reduce Energy Costs**
Reduce energy costs by up to 30% by optimizing energy usage
- **Optimize Energy**
Maximize the use of self-generated (solar) energy
- **Smart Charging**
Charge your electric vehicle when energy demand and prices are lowest
- **Smart Scheduling**
Automatically run appliances, making sure they are ready when you need them

A vital step towards a sustainable future

Now more than ever, with global warming, other climate changes and the geopolitical situation, the energy transition is becoming more important every day. Since several years we have become more aware of the need to build a durable future and recently to become more self sufficient as well. The need to reduce our carbon footprint, reduce the emission of greenhouse gases and also become less dependent on fossil fuels we often import from less reliable countries, has become more urgent than ever. This requires a complete energy transition, which is happening right now all around the world.

In this unprecedented energy crisis, energy management has become a high priority for building owners.

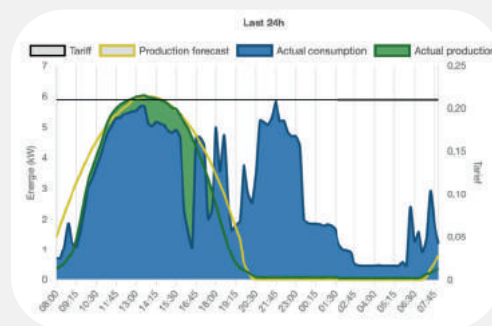
Maximize energy efficiency and grid capacity

The Smart Energy Manager enables users to save money by using their energy in the most cost-efficient way. On the other hand, for energy suppliers this is of great value as well, as they currently face issues with the limited capacity of the power grid. For energy suppliers, the solution helps address capacity issues on the power grid by shifting energy usage to off-peak hours. xxter's Smart Energy Manager makes sure energy is used during moments the demand for energy is low, resulting in a more distributed energy demand and hence lower costs.

The xxter Smart Energy Manager combines all available data to manage your energy smarter. For example, it uses weather forecast information to predict the production of your solar panels, it can use spot prices to schedule smart charging of your car, and much more.

How does it work?

The Smart Energy Manager from xxter uses data on energy pricing, weather forecasts and your energy needs to automatically schedule and balance energy usage across devices in the most cost-efficient way. By optimizing the use of solar panels, smart charging of electric vehicles and running of appliances when energy demand and prices are lowest, you can reduce your energy costs and lower your carbon footprint.



The xxter Smart Energy Manager

- Automatically enable or start endpoints, for instance an EV-charger, at the most efficient moment in time
- Lower or raise the temperature or setpoint of your heat pump based on available production or energy prices
- Forecast energy production based on season and weather conditions
- Smart charge your home battery, load when there is over capacity and use the storage when energy is expensive
- Easily visualise energy flows, consumption, charging and production



How much does it cost?

The Smart Energy Manager is implemented in every xxter device for free. The xxter controller has a consumer price of €1085 ex VAT.

Our products are KNX compatible. In case you don't have a KNX installation, contact your local installer to get more information on your specific situation. Depending on the size and number of components you want to add, pricing for the installation can differ.

Read our whitepaper about energy management here.



Improve your BREEAM score with xter

BREEAM stands for "Building Research Establishment Environmental Assessment Method" and is a measuring instrument for the assessment of the sustainability of buildings. BREEAM is used in more than 75 countries and its categories evaluate energy and water use, health and wellbeing, pollution, transport, materials, waste, ecology and management processes. Buildings are rated and certified on a scale of 'Pass', 'Good', 'Very Good', 'Excellent' and 'Outstanding'. Among the evaluated BREEAM categories is the metering and monitoring of energy, as declared in ENE 2, informing users on environmental impact, as declared in MAN9.



Efficient Energy Monitoring

xter offers an efficient solution for energy monitoring within a KNX system. This is crucial for organizations that want to improve their BREEAM score. Through advanced technology, xter helps you efficiently manage and monitor energy consumption.

ENE 2A en 2B - sub-metering and energy use

xter can contribute gaining both credits for this norm, as the management system wherein sub-metering is stored and made available. All required sub-metered zones are to be connected to the KNX-bus or Modbus, to provide their measured values at least once every 15 minutes.

This ensures that you can meet the following criteria

- The sub-meters are accessible and connected to xter, as the management system.
- In the My xter environment, all available metering data can be labeled, configured in zones and classified with the appropriate categories and types.
- The xter controller collects all configured data and stores it in 15 minute intervals.
- The device automatically uploads this data to the cloud, where it is securely stored for a minimum period of 2 years.
- In case data collection or cloud upload is disrupted, an alert can be sent to rectify the situation. A local copy of the data is kept until the upload is successful, to prevent dataloss.
- All data is accessible online in the My xter environment and can be downloaded as a csv file.
- Data can be visualized through My xter for all desired zones, categories and types in graphs and tables, over the preferred time period and compared to the previous period.
- Visualization can be shown on any display or (mobile) device with Internet access (see also MAN 9).
- Reports with visualizations can also be sent automatically by email in PDF format on set intervals.



BREEAM in a nutshell

- Energy monitoring in KNX environment
- Earn credits for higher BREEAM rating
- Supports ENE 2 and MAN 9 criteria